

(12) **United States Patent**
Grechanik et al.

(10) **Patent No.:** **US 8,898,100 B2**
(45) **Date of Patent:** **Nov. 25, 2014**

(54) **TESTING FOR RULE-BASED SYSTEMS**

(75) Inventors: **Mark Grechanik**, Chicago, IL (US);
Chen Fu, Lisle, IL (US)

(73) Assignee: **Accenture Global Services Limited**,
Dublin (IE)

(*) Notice: Subject to any disclaimer, the term of this
patent is extended or adjusted under 35
U.S.C. 154(b) by 339 days.

(21) Appl. No.: **13/250,348**

(22) Filed: **Sep. 30, 2011**

(65) **Prior Publication Data**
US 2013/0085979 A1 Apr. 4, 2013

(51) **Int. Cl.**
G06N 5/02 (2006.01)

(52) **U.S. Cl.**
CPC **G06N 5/025** (2013.01)
USPC **706/48**

(58) **Field of Classification Search**
CPC G06N 5/025
USPC 706/48
See application file for complete search history.

(56) **References Cited**
U.S. PATENT DOCUMENTS

5,442,792 A * 8/1995 Chun 717/155

OTHER PUBLICATIONS

Ramaswamy et al., Using directed hypergraphs to verify rule-based expert systems, IEEE Transactions on Knowledge and Data Engineering, vol. 9, No. 2, Mar.-Apr. 1997.*
Avritzer et al., Reliability testing of rule-based systems, International Symposium on Software Reliability Engineering, 1996.*
Wu and Lee, A token-flow paradigm for verification of rule-based expert systems, IEEE Transactions on Systems, Man and Cybernetics, vol. 30, No. 4 (2000).*
Fu and Fu, Mapping rule-based systems into neural architecture, Knowledge-Based Systems, vol. 3, Issue 1 (1990).*
Kiper, Structural testing of rule-based expert systems, ACM Transactions on Software Engineering and Methodology, vol. 1, No. 2 (1992).*
Kim et al., Test cases generation from UML state diagrams, IEE Proc.-Softw., vol. 146, No. 4 (1999).*
Biermann et al., Graphical definition of in-place transformations in the eclipse modeling framework, Model Driven Engineering Languages and Systems, LNCS 4199, pp. 425-439 (2006).*

* cited by examiner

Primary Examiner — Kakali Chaki

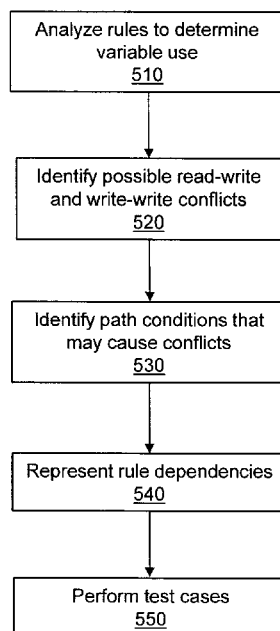
Assistant Examiner — Michael Zidanic

(74) *Attorney, Agent, or Firm* — Finnegan, Henderson, Farabow, Garrett & Dunner, LLP

(57) **ABSTRACT**

A non-transitory computer-readable medium tangibly embodied in a storage device encoded with instructions that, when executed on a processor, perform a method in a computer system for testing a rule-driven system, the method comprising detecting a potential read-write error or a potential write-write error in the rule-driven system, generating test results based on the detecting, and reporting the test results.

35 Claims, 40 Drawing Sheets



500